

**Name of the work: Fixing of concertina wire along the boundary wall of CMERI institute premises**

**SCHEDULE**

Item No.	Particulars of items	Unit	Qty	Rate (Rs.)	Amount (Rs.)
1	Providing and fixing concertina coil fencing with punched tape concertina coil 600 mm dia 10 metre openable length ( total length 90 m), having 50 nos rounds per 6 metre length, upto 3 m height of wall with existing angle iron 'Y' shaped placed 2.4 m or 3.00 m apart and with 9 horizontal R.B.T. reinforced barbed wire, stud tied with G.I. staples and G.I. clips to retain horizontal, including necessary bolts or G.I. barbed wire tied to angle iron, all complete as per direction of Engineer-in-charge, with reinforced barbed tape(R.B.T.) / Spring core (2.5mm thick) wire of high tensile strength of 165 kg/ sq.mm with tape (0.52 mm thick) and weight 43.478 gm/ metre (cost of M.S. angle, C.C. blocks shall be paid separately)	m	1550.00		
2	Supplying at site Angle iron post & strut of required size including bottom to be split and bent at right angle in opposite direction for 10 cm length and drilling holes upto 10 mm dia. etc. complete.	kg	1800.00		
3	Providing and laying cement concrete with 1:1½:3 (1 cement : 1½ coarse sand (zone-III) : 3 graded stone aggregate 20 mm nominal size) in retaining walls, return walls, walls (any thickness) including attached pilasters, columns, piers, abutments, pillars, posts, struts, buttresses, string or lacing courses, parapets, coping, bed blocks, anchor blocks, plain window sills, fillets, sunken floor etc., up to floor five level, excluding the cost of centering, shuttering and finishing.	cum	3.00		
4	Brick work with common burnt clay F.P.S. (non modular) bricks of class designation 7.5 in superstructure above plinth level up to floor V level in all shapes and sizes, with Cement mortar 1:4 (1 cement : 4 coarse sand).	Cum	5.00		
5	Centering & shuttering including strutting, propping etc & removal of form for : Lintels, Beams, Chajja, plinth beams, girders, bressumers and cantilevers.	sqm	30.00		
6	Applying one coat with ready mixed red oxide zinc chromate primer of approved brand and manufacture on steel work (second coat)	sqm	300.00		

*S. Mahanta*  
06/02/17

Name of the work: Fixing of concentina wire along the boundary wall of CMERI institute premises


SCHEDULE

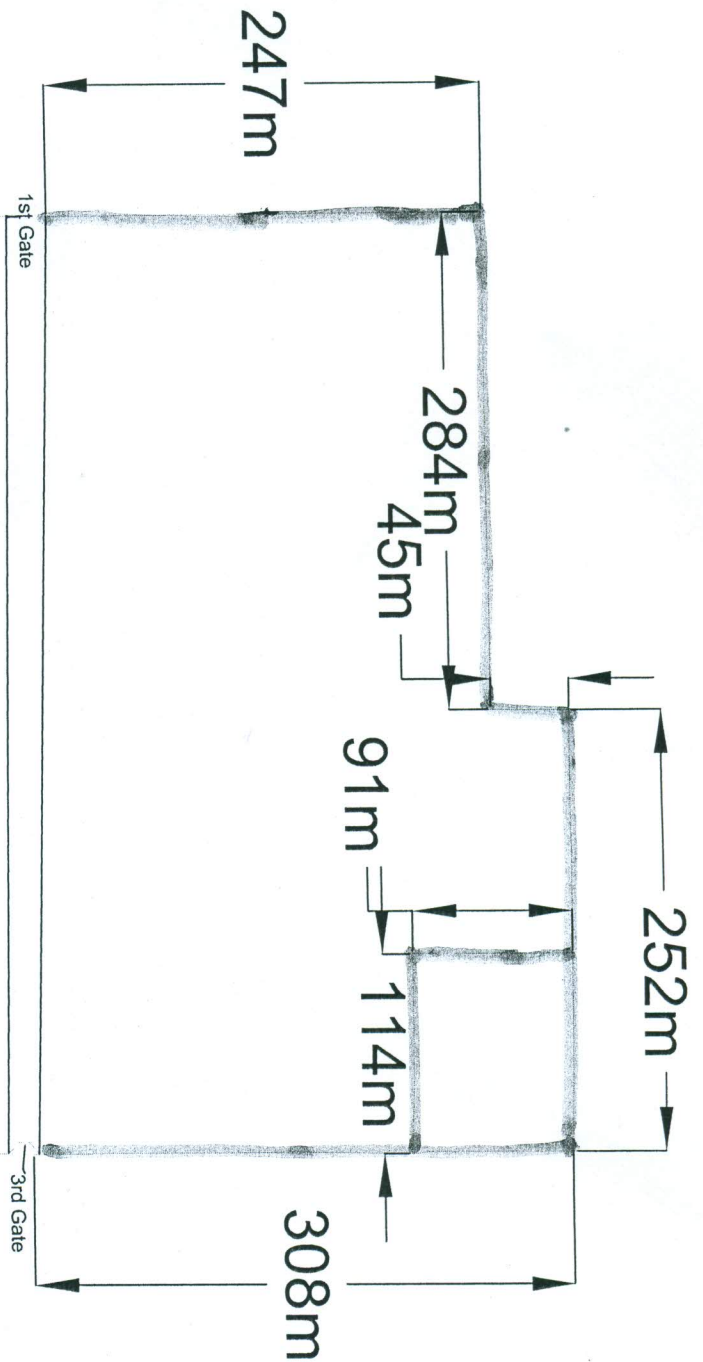
Item No.	Particulars of items	Unit	Qty	Rate (Rs.)	Amount (Rs.)
7	Painting with synthetic enamel paint of approved brand and manufacture to give an even shade. two or more coat.	sqm	300.00		
8	Labour for taking out (from fencing) line of wire (galvanised, strand or barbed) by drawing the same out through holes in the body of the post or through holes formed by fixed staples. (Payment to be made on the length of the wire taken out.)	m	7750.00		
9	Demolishing cement concrete of nominal concrete 1:3:6 or richer mix (i/c equivalent design mix) manually/ by mechanical means including disposal of material within 50 metres lead as per direction of Engineer - in - charge.	cum	2.00		
10	Demolishing brick work in cement mortar manually/ by mechanical means including stacking of serviceable material and disposal of unserviceable material as per direction of Engineer-in-charge.	cum	5.00		
11	Clearing grass and removal of the rubbish up to a distance of 50 m outside the periphery of the area cleared.	sqm	9500.00		
12	Dismantling steel work manually/ by mechanical means in built up sections without dismembering and stacking within 50 metres lead as per direction of Engineer-in-charge.	kg	600.00		
				TOTAL (Rs.)	

TOTAL Rs. (in words)

Shah  
08/02/12

Date - 06/03/12

 = Concentrina wire to be fixed.



8/20/12  
06/03/12