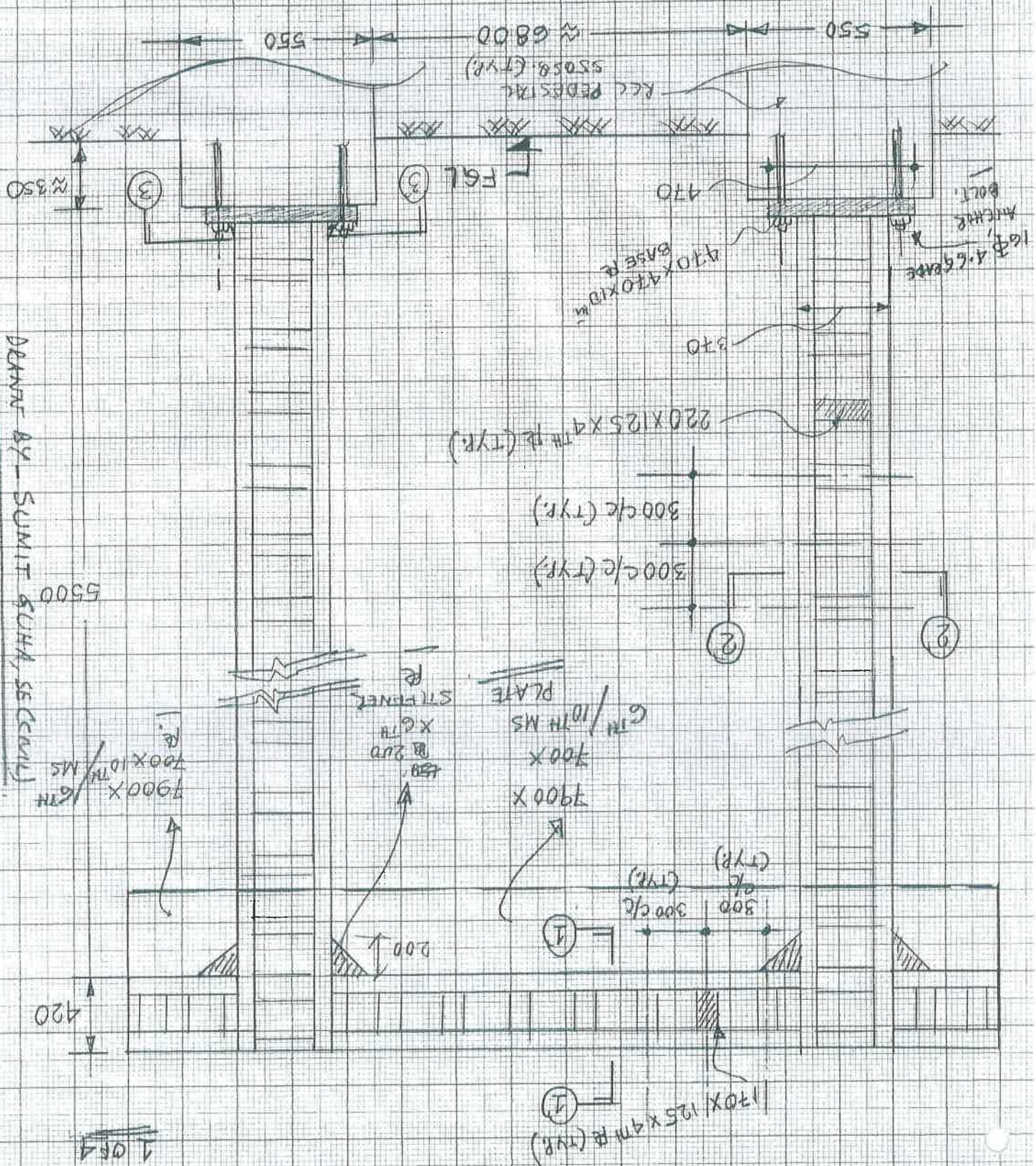


13/12/2016

NOT TO SCALE

STRUCTURAL DETAILS OF "CSIR-CMERI" HOODING AT NPTI END GATE.

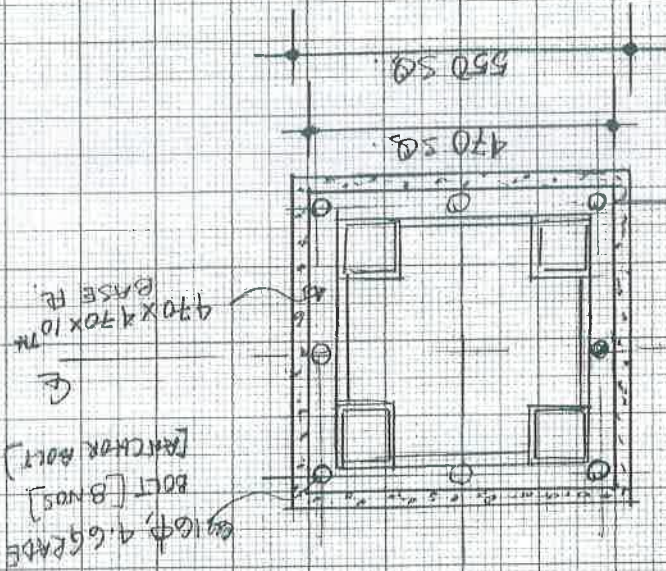


BLANK BY - SUMIT GUHA, SE (CIVIL)

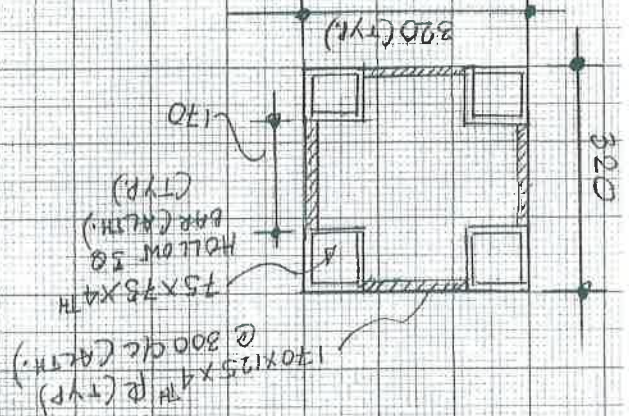
~~13/10/2018~~

SEC. (3) (3)

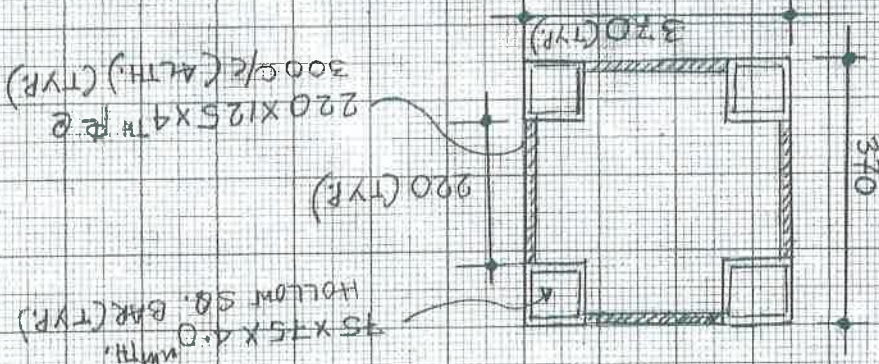
NOT TO SCALE



SEC. (1) (1)



SEC. (2) (2)

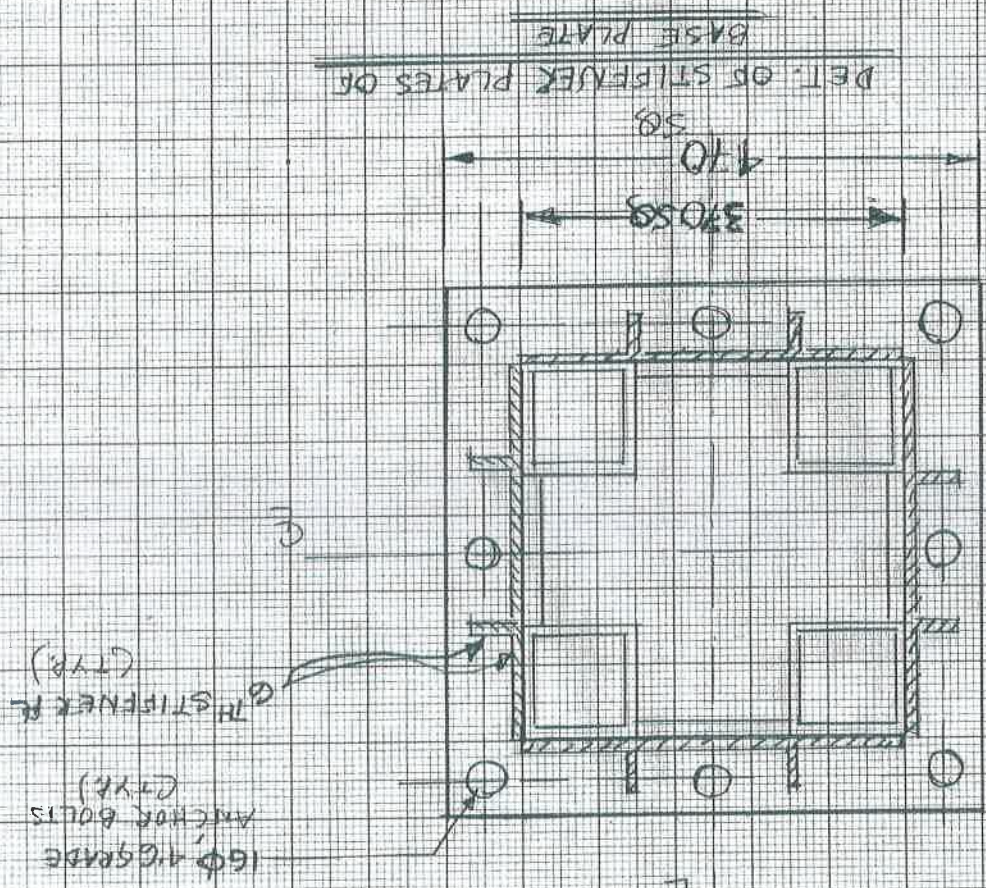


2069

NOT TO SCALE

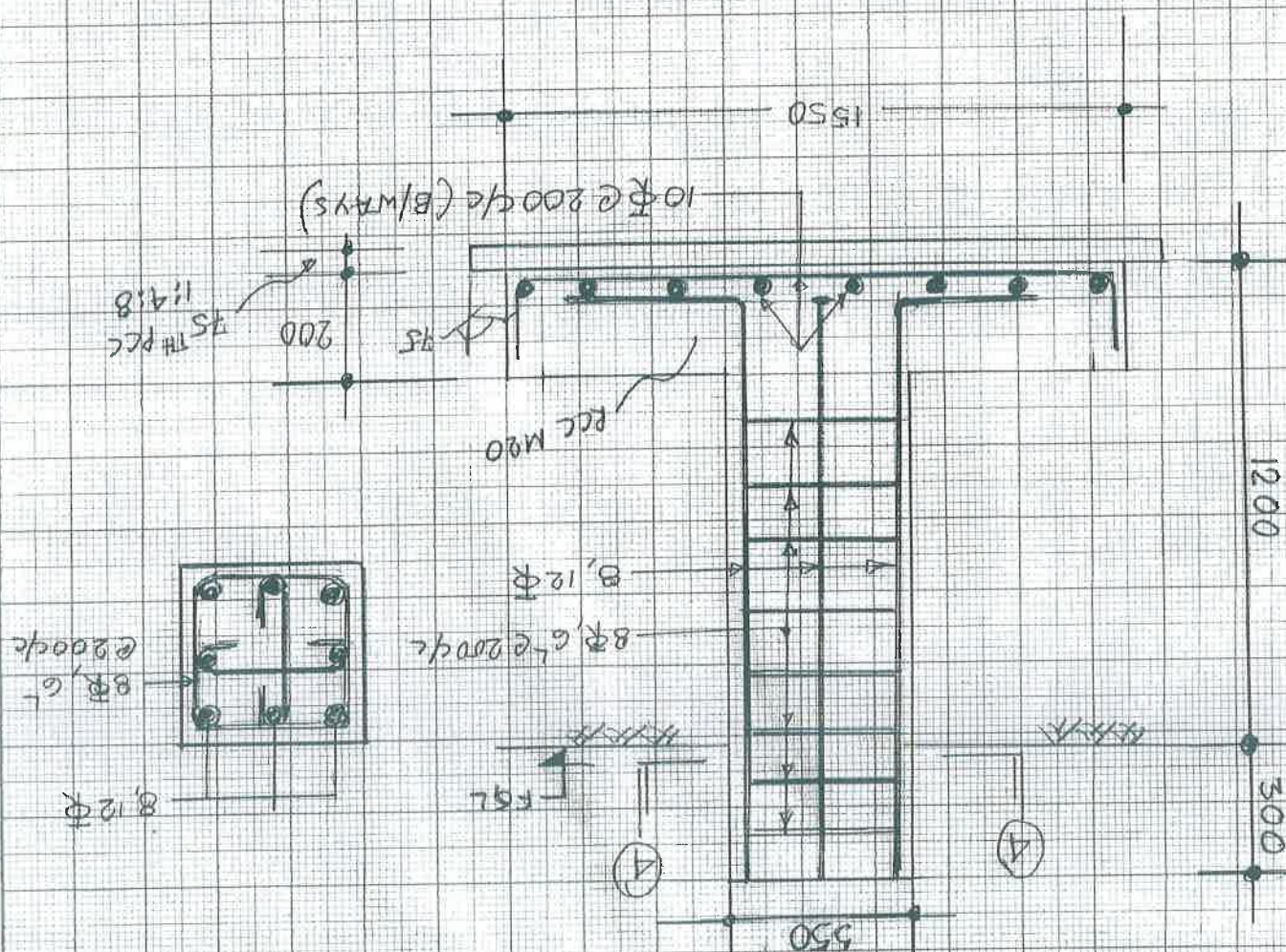
13/12/2006

DRWN BY - SUMIT GUHA, SECURID



DEATH BY - SUICIDE (GVA)

FOUNDATION DETAILS



454