

# AN INITIATIVE TOWARDS RENEWABLE ENERGY HARVESTING

Solar Power Tree is the perfect solution to the question of availability of the land in the future for generating solar power - It take up only a fraction of land consumed by conventional systems. To bring visibility to solar technology and to enhance the beautification of a site, CSIR-CMERI has developed solar artifacts. Similar to solar tree, solar artifacts can be installed in various places to produce electricity. Moreover it can add to the beautification of a place with their aesthetic design. It can be installed in the road side, parks and other remote areas to generate electricity.

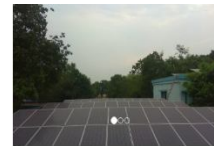
## Uniqueness

1. Customized design
2. Hybridization with bio-mass and bio-fuel
3. Integrated system with air purification, smart lighting to mitigate carbon footprint
4. To mitigate space requirements and beautification
5. Self-sustainability of any plant or system with solar and with other energy source.



## Deployment Status (15nos.)

- WBPDCCL, Kolkata through WBREDA
- Srijani Auditorium, Durgapur Municipal Corporation
- Circuit House, Durgapur Steel Plant
- Baba Bhagwan Ram Ashram Trust, Chattisgarh



## EXPERTISE

- Design
- Manufacturing & Development
- Electrical Design and Installation
- Standard installation and commissioning team to ensure system stability