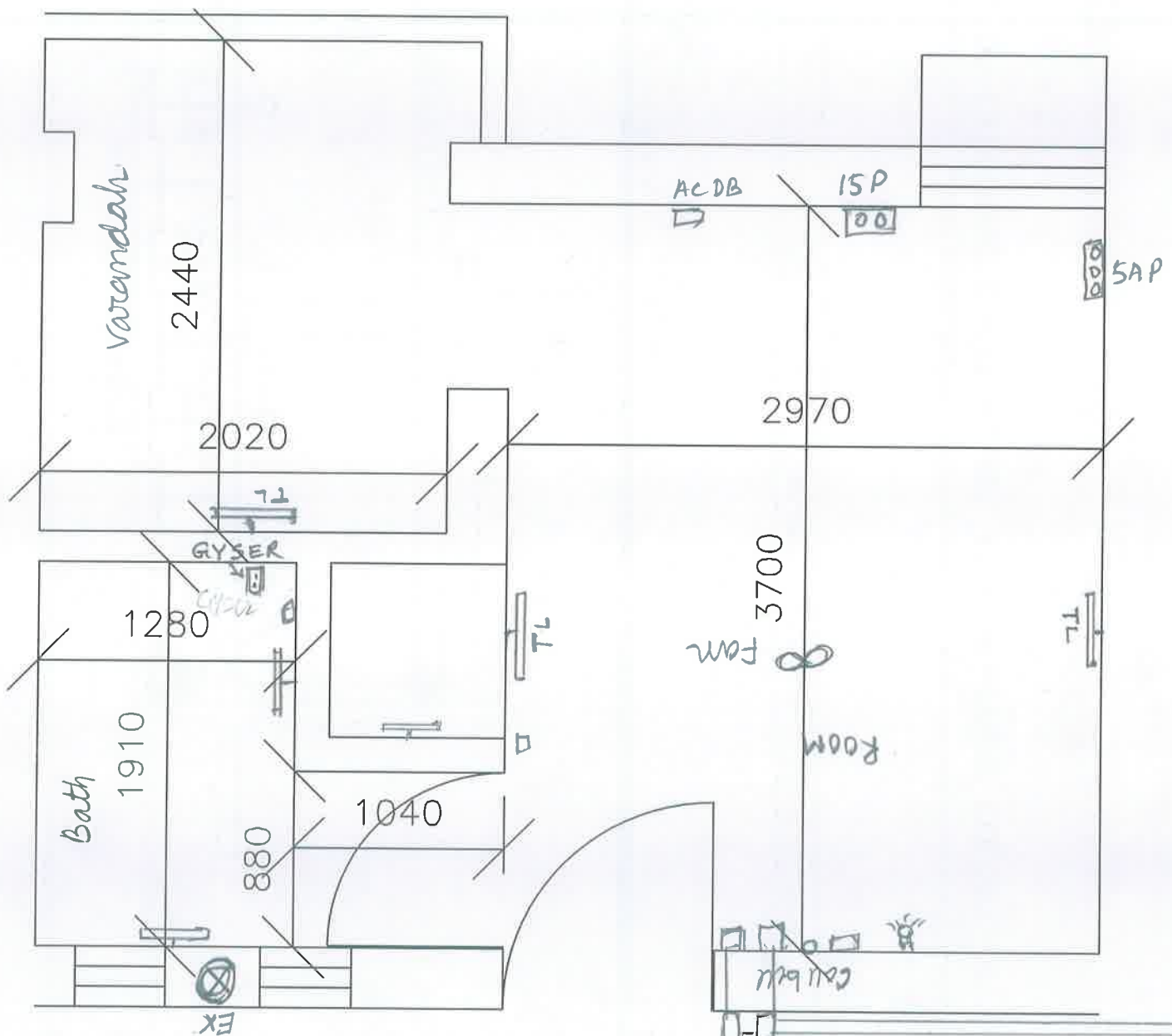


SKETCH FOR SINGLE ROOM



FOR ROOM

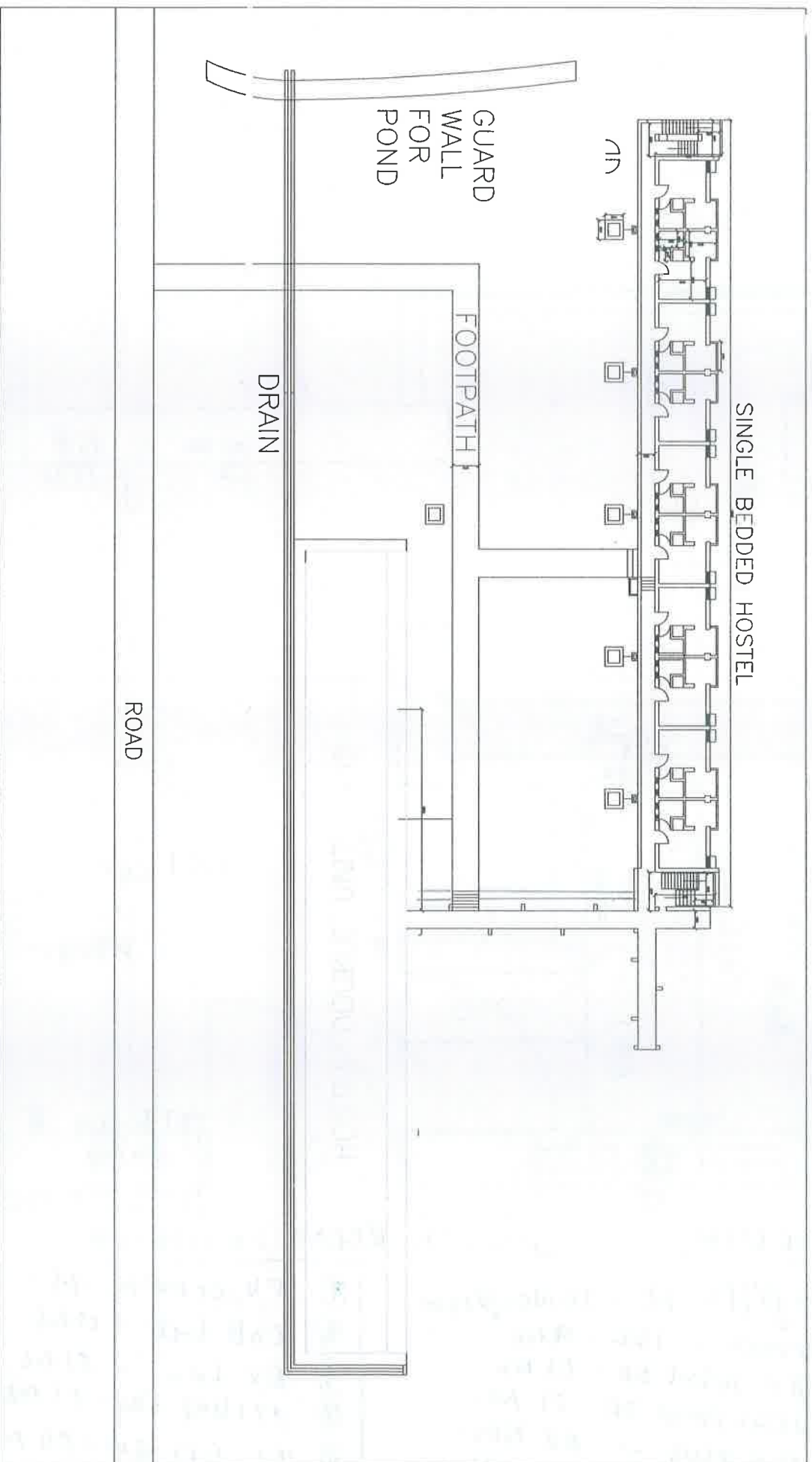
- ① Light/Fan pt - 10 Nos/Room.
- ② GYser - 15 L - 01 No.
- ③ A C point DB - 01 No.
- ④ GYser Point DB - 01 No.
- ⑤ 15A plug - 02 NOS.
- ⑥ 5A plug - 05 NOS.

SINGLE ROOM EX HOSTLE

- ⑦ TV Coaxial pt - 1 No.
- ⑧ Cell bell - 01 No.
- ⑨ Ex fan - 01 No
- ⑩ ceiling fan - 01 No.
- ⑪ TL 4 ft 18 W - 04 Nos.
- ⑫ TL 2 ft 9 W - 02 Nos.
- ⑬ Foot Light - 01 No.

- (3) DB Power - 2 No

~~A. Hayes~~



MODIFIED PLAN VIEW OF EXECUTIVE GUEST HOUSE AT CSIR-CMERI COLONY OF SINGLE BEDDED HOSTEL